

## FWM Web Version 7 : New Features/Changes

The following is a list of new features/changes available in the enhanced FMW Web Version 7.

- Search functions for Reports and Views
- Dynamic sum, average and count displayed for selected cells in Reports and Views
- Report bookmarking
- Report current / total pages displayed
- Report prints current page by default
- Report run-time parameters hidden if not relevant

### **Search Function within Reports and Views**

A search is available to users. This feature allows the user to search a report or Version view for matching values or ranges of values.

The search feature will search through all report pages, as well as drill-down levels even when not expanded. Once a matching value is found a Search Next function becomes available to move on to the next match. Please note that both text and numeric data may be used to search.



To activate the search function click on the search icon

In the example below the user was looking for an amount between 33640 and 33650. Even though the amount was not displayed in the report at the time of the search, the search feature found the amount that matched the criteria and expanded the report to show the result.

ion

Search Criteria

Contains  Case sensitive

Starts with

Exact

Between

Find between

33640 33650

Find Cancel

Assessment		
Division		33,649
Administration	1.00	233,649
	1.00	233,649

### **Dynamic Sum, Average and Count Displayed for Selected Cells in Report and Views**

The Sum, Average and Count will be dynamically calculated and displayed on the message bar for selected cells for both Reports and Views. This function is similar to MS Excel ©.

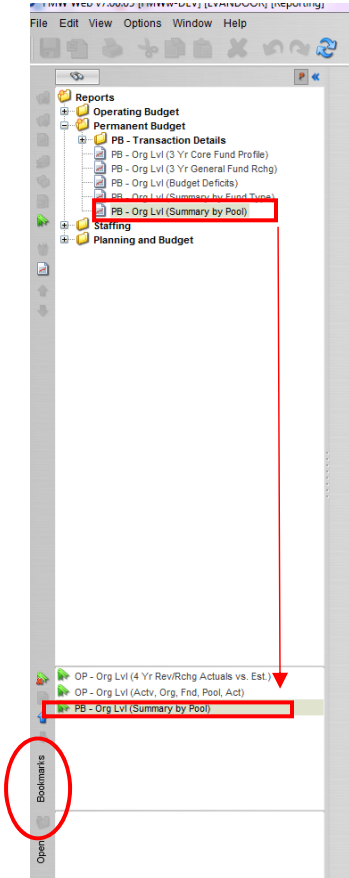
In the example below the user selected the range between 131,243 and 146,640. Notice the Sum, Count and Average in the message bar (bottom right of the FMW screen).

1,898	2.6	131,243		5,692
	1.26	50,806	2,000	
	0.84	38,022		
	0.67	31,557		
	1.05	45,756		
1,898	6.47	297,384	2,000	5,692
	2.34	105,392		15,000
5,184	3.50	146,640		19,366
5,184	5.84	252,032		34,366
	1.11	49,844		31,128
1,200	2.42	112,500		8,956

Sum: 846,800 Count: 8 Average: 105,850

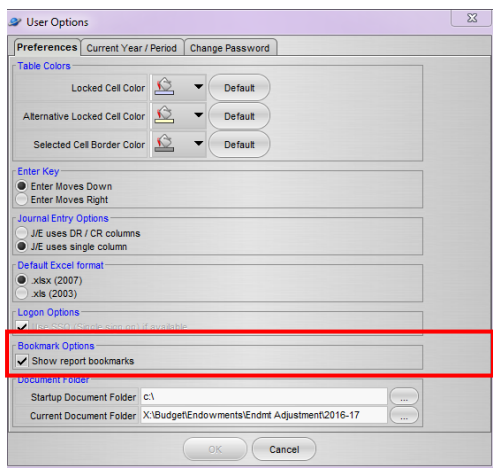
## Report Bookmarking

- A bookmarking area has been included in the Report Navigator.
- Reports may be dragged from the Navigator and dropped into the bookmarks list in the desired location relative to other bookmarked reports.
- Each user maintains a separate set of bookmarks.
- Bookmarked reports may be resorted or removed from the list.
- Bookmarked reports may be executed directly from the list.



Users who do not require the bookmarks area can remove it by going to:

Options >User Options: Uncheck the box under Bookmark Options



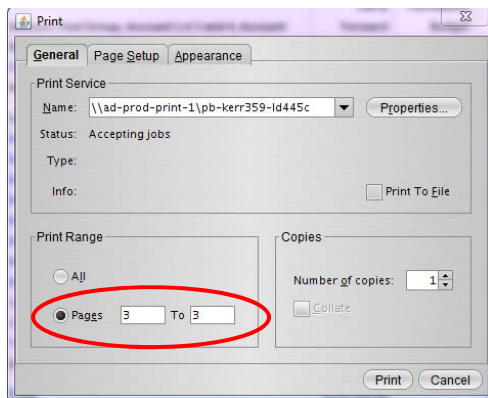
## Report Current/Total Pages displayed

When viewing a report on-screen, a current/total pages count is dynamically displayed on the toolbar. In the example below four selections were made for this report: 19900,19915,19924 and 19933. Fund 19924 is "Page 3" of 4. If 19900 was selected the display would show 1/4.



## Report Prints Current Page by Default

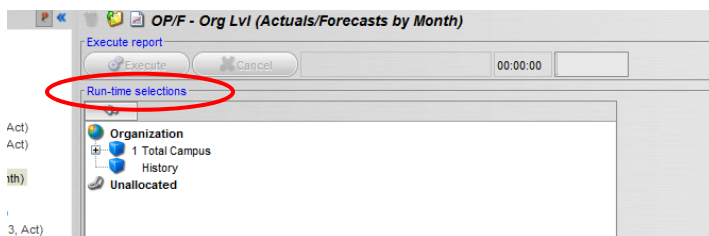
When printing a report, the current page is selected by default (using the same example as above, page 3 is automatically selected when choosing to print. If the user requires all pages, the All option on the Print dialog may be selected.



## Report Run-Time Parameters Hidden If Not Relevant

When executing a report, if one or more of the Version, View/Class column or Year run-time parameters has been predefined (hard-coded), the Run-time selections will be hidden. Previously the selection criteria was grayed out when it could not be modified by the user (hard-coded in report).

### Example 1



Example of run-time selections in the same report in the **previous** version of FMW:

